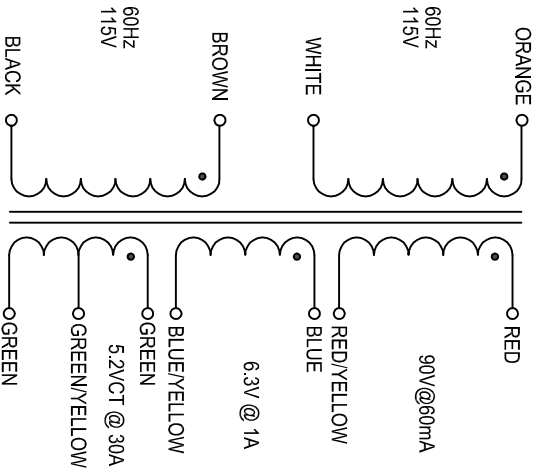


PRIMARY

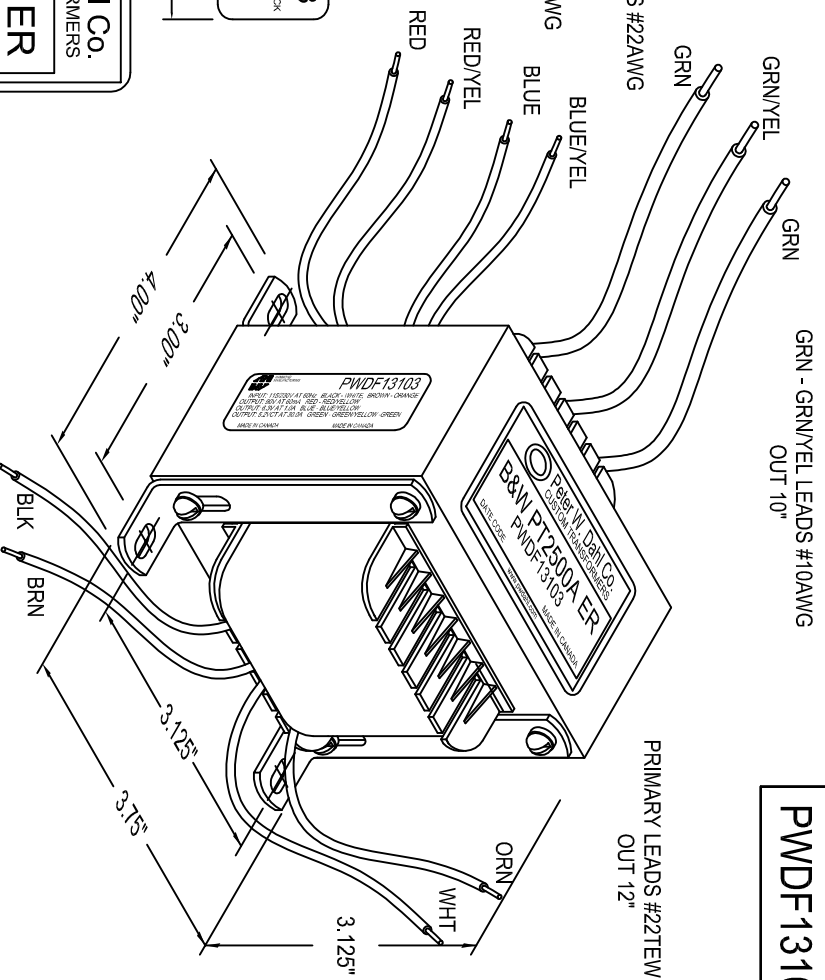
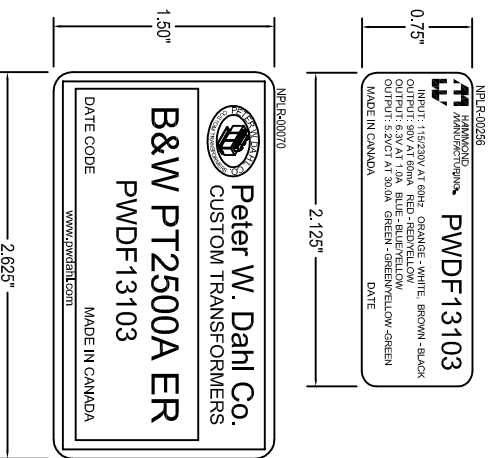
SECONDARY



ELECTRICAL DATA:

TESTS	CONDITIONS	ACCEPTANCE CRITERIA
I _{EX}	@115V, 60HZ	ORN - WHT 250mA MAX
SEC. N.L.V.	@ 115V, 60HZ	ORN - WHT 115.0V ±2% BRN - BLK 93.84V ±2% RED - RED/YEL 6.51V ±2% BLU - BLU/YEL 2.71V ±2% GRN - GRN/YEL 5.42V ±2%
DCR		ORN - WHT 2.58 Ohms ±20% BRN - BLK 2.74 Ohms ±20% RED - RED/YEL 30 Ohms ±20% BLU - BLU/YEL 0.133 Ohms ±20% GRN - GRN 0.004 Ohms ±20%
IN OHMS		ORN - WHT 2.58 Ohms ±20% BRN - BLK 2.74 Ohms ±20% RED - RED/YEL 30 Ohms ±20% BLU - BLU/YEL 0.133 Ohms ±20% GRN - GRN 0.004 Ohms ±20%
HIPOT	PRIMARY to SECONDARY & CORE 3000V, 60HZ, 1 SEC	5mA MAX.

LABELS:



NUMBER
PWDF13103

PROPERTY AND COPYRIGHT NOTICE

THIS DRAWING AND THE INFORMATION IT CONVEYS ARE THE PROPERTY OF HAMMOND MANUFACTURING. IT MAY NOT BE REPRODUCED, TRANSMITTED OR USED IN ANY MANNER WHATSOEVER WITHOUT THE WRITTEN PERMISSION OF HAMMOND MANUFACTURING.

REV	NOTES	BY	DATE	DRAWN	DATE	NUMBER
1	CHANGED THE POSITION OF THE OUTPUT LEADS.	GG	01/30/17	G. GRAY	01/13/2017	PWDF13103

CUSTOM POWER TRANSFORMER

HAMMOND MANUFACTURING
 ELECTRONIC DIVISION
 52 RANKIN PLACE
 WATERLOO, ONTARIO, N2J 3Z5
 PHONE: 519.886.6181 FAX: 519.886.9540